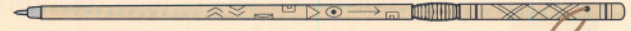
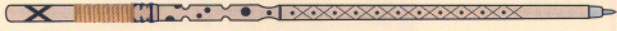


WHY DOES A BOY SCOUT CARRY A STAFF?

"Why does a Boy Scout carry a staff?" is a question that is often asked by people who do not know the many uses to which this useful article can be put. The illustrations given below show several different ways in which the staff will prove a handy and valuable article, essential to the Scout's outfit.



The staff is very useful for beating out brush fires and outbreaks that occur in open fields.



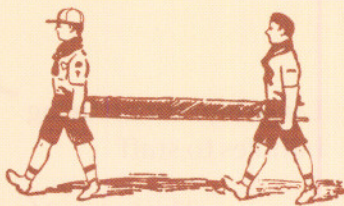
Wading a stream. Two or three Scouts grasp the staff like this.



Both patrol tents and teepees can be made with the aid of the staff.



To stop an aggressive dog, hold the staff crosswise in front of you and toward the animal, as shown above.



An improvised stretcher of coats and staffs



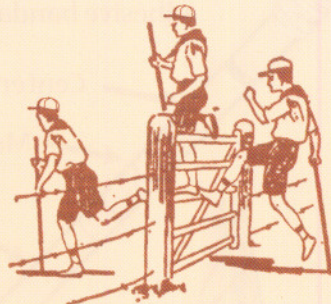
A line of Scouts linked together on a night hike



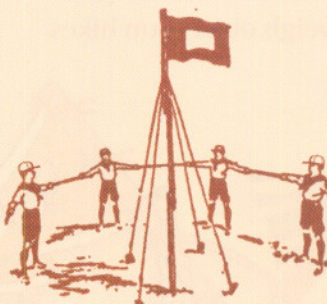
When someone falls through ice, throw him your staff so he can grasp it like this until you can get a rope and pull him out.



When climbing gates, you can give yourself a push up with your staff.



For erecting a flagstaff and forming a fence, the staff is very useful.



As a tripod for cooking, and also as a seat, the staff is handy in camp.

FURTHER USES OF THE STAFF



Recovering objects floating in the water

Feeling the way over marshy ground

Levering up logs and stones

Jumping ditches

Making rafts

Bridge building

Measuring distances

Self-defense

Making splints

Rope ladders

Climbing a Mountain—

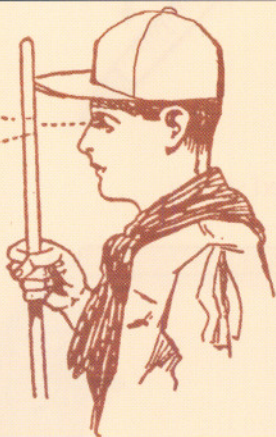
Carry the staff crosswise, and if you slip, lean inward upon it against the side of the mountain. The weight of your body will drive the end of the staff into the earth, and to anchor you.

Important Notice

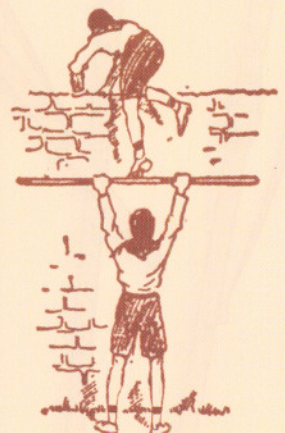
Scouts are strongly urged to obtain their own individual staffs of natural wood. These will be found much more serviceable than the ordinary factory-made article.

Factory-Made Staffs (Only)

For the convenience of Scouts who are unable to obtain natural staffs, the Supply Group sells staffs of finished wood.



A clear view can be had by looking through a small hole drilled in the staff.



This picture shows a simple way of scaling a wall with the help of a staff.